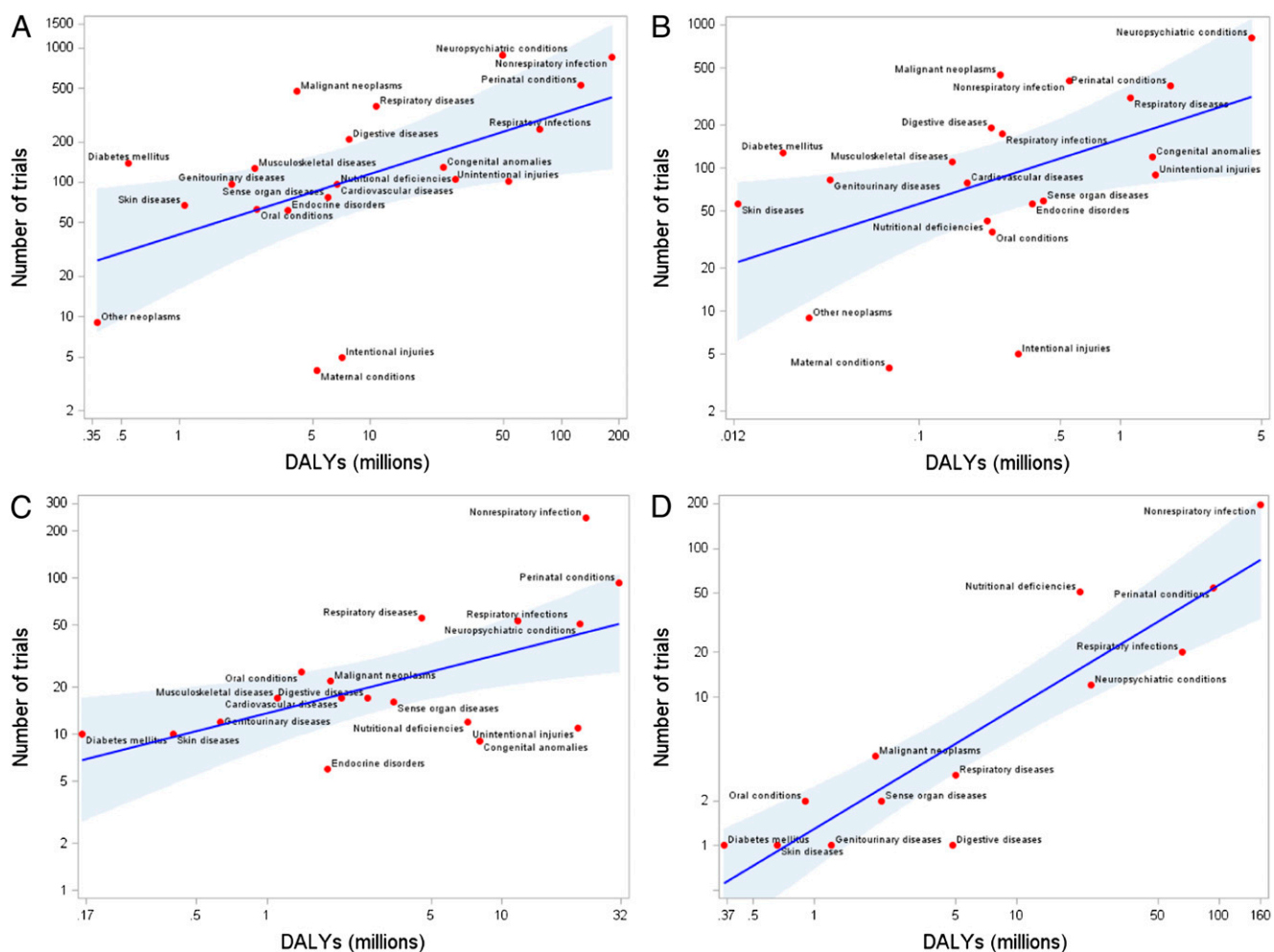


Supplemental Information



SUPPLEMENTAL FIGURE 3

A, Scatter plot of correspondence between pediatric clinical trials and burden of disease globally. A linear regression line with 95% confidence intervals is plotted with log-transformed values of condition-specific number of pediatric clinical trials and burden of disease (measured in DALYs). Axes are scaled in logs but labeled with nontransformed values for clarity. B, Scatter plot of correspondence between pediatric clinical trials and burden of disease in high-income countries. C, Scatter plot of correspondence between pediatric clinical trials and burden of disease in middle-income countries. Three disease categories (intentional injuries, maternal conditions, and nonmalignant neoplasms) were not studied in any clinical trials and are not shown. D, Scatter plot of correspondence between pediatric clinical trials and burden of disease in low-income countries. Eight disease categories (intentional and unintentional injuries, congenital anomalies, maternal conditions, cardiovascular disease, endocrine disorders, musculoskeletal disease, and nonmalignant neoplasms) were not studied in any clinical trials and are not shown.