

# Long-Chain Polyunsaturated Fatty Acids and Cognition in VLBW Infants at 8 years: an RCT

Astrid Nylander Almaas, MD<sup>a,b</sup>, Christian K. Tamnes, PhD<sup>c</sup>, Britt Nakstad, MD, PhD<sup>a</sup>, Christine Henriksen, PhD<sup>b</sup>, Kristine B. Walhovd, PhD<sup>c</sup>, Anders M. Fjell, PhD<sup>c</sup>, Paulina Due-Tønnessen, MD<sup>d</sup>, Christian A. Drevon, MD, PhD<sup>b</sup>, Per Ole Iversen, MD, PhD<sup>b</sup>

## abstract

**OBJECTIVE:** To test the hypothesis that supplementation with the long chain polyunsaturated fatty acids docosahexaenoic acid (DHA) and arachidonic acid (AA) to very low birth weight (VLBW) infants would improve long-term cognitive functions and influence neuroanatomical volumes and cerebral cortex measured by MRI.

**METHODS:** The current study is a follow-up of a randomized, double-blinded, placebo-controlled study of supplementation with high-dose DHA (0.86%) and AA (0.91%) to 129 VLBW infants fed human milk. Ninety-eight children participated at 8 years follow-up and completed a broad battery of cognitive tests. Eighty-one children had cerebral MRI scans of acceptable quality.

**RESULTS:** There were no significant differences between the intervention group and the control group on any of the cognitive measures. Equally, MRI data on segmental brain volumes and cerebral cortex volume, area, and thickness suggested no overall group effect.

**CONCLUSIONS:** This study is the first long-term follow-up of a randomized controlled trial with supplementation of DHA and AA to human milk fed VLBW infants investigating both cognitive functions and brain macrostructure measured by MRI. No cognitive or neuroanatomical effects of the supplementation were detected at 8 years of age.



**WHAT'S KNOWN ON THIS SUBJECT:** Suboptimal brain development and increased risk of cognitive deficits are well documented in very low birth weight children. Supplementation with docosahexaenoic acid and arachidonic acid has been associated with positive cognitive effects.

**WHAT THIS STUDY ADDS:** This follow-up study of a randomized controlled trial of supplementation with docosahexaenoic acid and arachidonic acid to very low birth weight infants is the first report on both cognition and brain macrostructure measured with MRI. No cognitive or neuroanatomical effects were detected at 8 years.

<sup>a</sup>Akershus University Hospital and Faculty Division AHUS, Institute for Clinical Medicine, <sup>b</sup>Department of Nutrition, Institute of Basic Medical Sciences, Faculty of Medicine and <sup>c</sup>Research Group for Lifespan Changes in Brain and Cognition, Department of Psychology, University of Oslo, Oslo, Norway; and <sup>d</sup>Department of Radiology, Rikshospitalet, Oslo University Hospital, Oslo, Norway

Dr Almaas conceptualized and designed the study, collected the data, carried out the initial analyses, and drafted the initial manuscript; Dr Tamnes designed the protocol for cognitive assessment and MRI, carried out the initial analyses on these fields, and reviewed and revised the manuscript; Drs Nakstad, Drevon, and Iversen conceptualized and designed the study and reviewed and revised the manuscript; Dr Henriksen conceptualized and designed the study, collected the data, carried out the initial analyses on baseline and perinatal data, and reviewed and revised the manuscript; Drs Walhovd and Fjell conceptualized and designed the study for cognitive assessment and MRI and reviewed and revised the manuscript; Dr Due-Tønnessen designed the protocol for MRI, analyzed MRI data, and reviewed and revised the manuscript; and all authors approved the final manuscript as submitted.

The original trial has been registered at [www.clinicaltrials.gov](http://www.clinicaltrials.gov) (identifier NCT00226187).

[www.pediatrics.org/cgi/doi/10.1542/peds.2014-4094](http://www.pediatrics.org/cgi/doi/10.1542/peds.2014-4094)

**DOI:** 10.1542/peds.2014-4094

Accepted for publication Mar 3, 2015

Address correspondence to Astrid Nylander Almaas, MD, Department of Nutrition, Institute of Basic Medical Sciences, Faculty of Medicine, University of Oslo, PO Box 1046 Blindern, 0317 Oslo, Norway. E-mail: [astrid.almaas@medisin.uio.no](mailto:astrid.almaas@medisin.uio.no)

PEDIATRICS (ISSN Numbers: Print, 0031-4005; Online, 1098-4275).

Copyright © 2015 by the American Academy of Pediatrics

Very low birth weight (VLBW; <1500 g) infants have increased risk of perinatal brain injury and adverse neurologic outcome.<sup>1</sup> Brain alterations in VLBW infants are well documented with MRI. Meta-analyses reveal reductions of total brain volume, white and gray matter, cerebellum, hippocampus, caudate and corpus callosum,<sup>2,3</sup> and these changes seem to persist into adolescence.<sup>4–10</sup> Alterations in brain structures correlate with intellectual and motor abilities in preterm infants.<sup>11–14</sup>

The neuropathology of brain development in premature infants reflects multiple factors. Extensive growth and maturation of the brain take place during the last trimester of pregnancy, and nutrition and growth seem to influence brain and cognitive development.<sup>14–18</sup> Docosahexaenoic acid (DHA) and arachidonic acid (AA) are essential for development of the central nervous system. Emerging evidence suggests that DHA positively influences cortical metabolic function and cognitive development.<sup>19,20</sup> Major accumulation of DHA and AA in the brain occurs during the last trimester and the first postnatal months, and premature children are deprived of this accumulation prenatally.<sup>21–24</sup> Human milk is a good natural source of DHA/AA and may contain adequate amounts to cover the demands of a full term infant.<sup>25</sup> The intrauterine supply of DHA during the last trimester of pregnancy (estimated to 50 mg/day)<sup>26</sup> is, however, much higher than what traditionally has been given via breast milk or formula to premature infants. Supplementation of DHA/AA to premature infants has been associated with positive effects on cognition in several studies.<sup>20,27–31</sup> Conversely, 2 systematic reviews of supplementation with low-dose long chain polyunsaturated fatty acids (LCPUFAs) revealed no significant effects on cognition.<sup>32,33</sup> Recent systematic reviews request further randomized controlled trials (RCTs)

with LCPUFAs and cognitive development in premature infants.<sup>28,34,35</sup> In our previous randomized placebo-controlled trial including 129 VLBW infants, we tested the effect of supplementation of DHA/AA or placebo after birth, and found positive effects on cognition as measured with event-related potentials at 6 months corrected age,<sup>29</sup> and at 20 months in terms of attention capacity in free-play sessions.<sup>36</sup>

The effects of LCPUFA supplementation on cerebral cortex structure and brain volumes in childhood are not well described. RCTs with essential fatty acids and cerebral MRI are scarce and inconclusive.<sup>19,37</sup> Thus, follow-up studies of randomized controlled intervention trials with brain development measured by MRI are warranted.<sup>38</sup>

In our present follow-up study, we tested the hypothesis that DHA/AA supplementation of VLBW infants fed human milk would show persistent positive effects on cognition, in line with our earlier studies of this cohort.<sup>29,36</sup> We also hypothesized that supplementation would have effects on brain macrostructure measured by quantitative MRI.

## METHODS

### Original Trial Intervention

Our present study is a follow-up of a randomized, double-blinded, placebo-controlled trial of supplementation with DHA and AA to VLBW infants. A detailed description of this trial has been published.<sup>29</sup> Briefly, the intervention group received supplementation of 32 mg (0.86% of total fatty acids) DHA and 31 mg (0.91%) AA per 100 mL of human milk (on average 9 weeks after birth). The supplementation was high-dose compared with the level of 0.3% typically added to preterm formula.<sup>35</sup> All 129 infants who completed the intervention were fed

mothers/donor milk from day 1 or 2 (starting procedure is 0.5 mL/kg per hour). All but 5 infants received some parenteral nutrition (mean 9.45 mL/day). Full enteral feeding (defined as 150 mL/kg per day) was achieved after a median of 7 days. Infants receiving donor milk changed to term formula during the last days before discharge, at the mean age of 70 days. Exclusion criteria were major congenital abnormalities and cerebral hemorrhage (grade 3 or 4). Cognitive development was evaluated at 6 months of age by using the Ages and Stages Questionnaire and event-related potential indices of recognition memory,<sup>29</sup> and at 20 months in terms of attention capacity in free-play sessions.<sup>36</sup> Written informed consent was obtained from the parents, and both the original trial and the follow-up study were approved by the Regional Committee for Medical and Health Research Ethics. The trial was registered at <http://www.clinicaltrials.gov> with identifier NCT00226187.

### Eight-Year Follow-up Study

#### Participants

All 129 infants who completed the original trial were invited to participate in the follow-up study. Ninety-eight children (76%; intervention group,  $n = 45$ ; control group,  $n = 53$ ) met for cognitive testing at a mean age of 8.6 years. Eighty-four completed MRI, and 81 children (83% of the 98 participants at 8-year follow-up, 63% of the original 129 participants) had MRI of sufficient quality for analysis (Fig 1). Significant pathology was discovered in 4 participants on MRI.

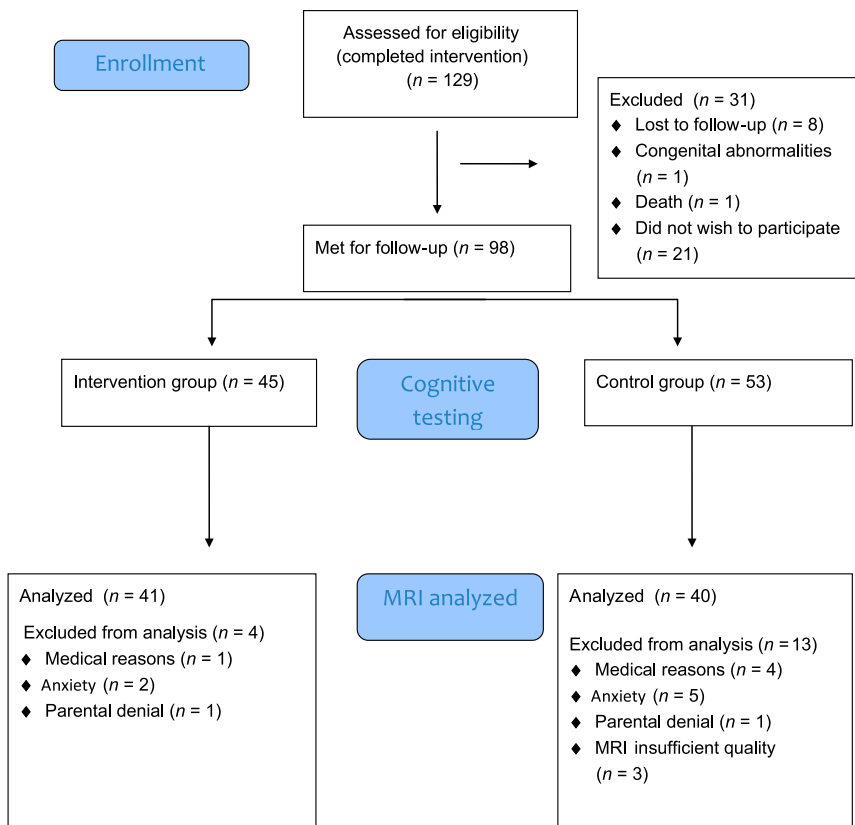
#### Cognitive Assessment

Cognitive testing was administrated by 1 trained pediatrician blinded to group allocation and medical history of the child.

#### General Intellectual Abilities

The Wechsler Abbreviated Scale of Intelligence provides measures of

CONSORT 2010 Flow Diagram



**FIGURE 1**  
Flowchart of progress through the study.

verbal IQ (VIQ) and performance IQ (PIQ). VIQ consists of vocabulary and similarities subtests and PIQ of matrix reasoning and block design subtests. Full scale IQ (FSIQ) was estimated from all 4 subtests.<sup>39</sup> Each index score was age-standardized relative to the norms, with a mean of 100 and an SD of 15.

#### Short-Term and Working Memory

The Wechsler Intelligence Scale for Children III Digit Span Forward primarily tests verbal short-term memory, whereas Digit Span Backward tests working memory and ability to manipulate verbal information while in temporary storage.<sup>40</sup> Each correct response is

scored as 1 point, with a total possible score of 16 points on Digit Span Forward and 14 points on Digit Span Backward.

#### Learning and Memory

The California Verbal Learning Test II (CVLT-II) measures multitrial learning and long-term recall abilities for verbal information.<sup>41</sup> The task consists of 16 words from 4 semantic categories read 5 times; each time the child is instructed to repeat all items immediately. After a 30-minute delay during which other tasks were performed, the child was asked to recall the first list again. The total possible score was 80 on the learning measure and 16 on the recall tests.

#### Motor Skills

The Grooved Pegboard test was used to assess motor coordination and speed. The task exposes 25 holes with randomly positioned slots and pegs with a key along 1 side so they must be rotated to fit. Seconds used to complete the task with the dominant and the nondominant hand, respectively, are measured.<sup>42</sup>

#### MRI Acquisition

Imaging data were acquired by using a 12-channel head coil on a 1.5 Tesla Siemens Avanto scanner (Siemens Medical Solutions, Erlangen, Germany) at Oslo University Hospital, Rikshospitalet. The pulse sequence used for morphometric analyses was a 3D T1-weighted Magnetization Prepared Rapid Gradient Echo (MP-RAGE), repeated at minimum twice for each subject (for detailed sequence information, see Supplemental Information). The protocol also included a T2-weighted fluid-attenuated inversion recovery sequence to aid the radiologic examination.

#### MRI Analysis

Raw data sets were deidentified and transferred to Linux workstations for processing and analyses. Each MP-RAGE was visually inspected by 1 researcher blinded to group allocation, and for each subject the scan with the highest quality was selected for the analyses. Three subjects had no scan of acceptable quality and were excluded from further analyses. Volumetric segmentation and cortical surface reconstruction were performed with FreeSurfer 5.3 (<http://surfer.nmr.mgh.harvard.edu/>)<sup>43-46</sup> (for details regarding the MRI analysis, see Supplemental Information). All individual segmentations and surfaces were inspected for accuracy. Intracranial volume (ICV) was estimated by using an atlas normalization procedure.<sup>47</sup>

#### Statistical Analyses

Analyses were performed with SPSS version 22.0 (IBM SPSS Statistics, IBM

Corporation). Normally distributed data are presented as mean and SD, examined with 2-sample *t* test. Nonnormally distributed data are presented as median and range, and categorical data are presented as numbers (percent). Statistical significance was defined as  $P < .05$ . Because the number of participants in our follow-up study was already given, a posthoc power calculation was not conducted. To describe the effect in the 2 groups, we present the confidence interval (CI) of the difference between the intervention and control groups. The 95% CI for FSIQ is  $-5.1$  to  $2.5$ .

Cognitive data were tested for group differences with analysis of covariance, with gender, age, birth weight, and gestational age as covariates. All cognitive results were Bonferroni-corrected by a factor of 10 (reflecting the number of variables), roughly corresponding to a corrected  $\alpha$  of  $<.005$ . Similar analyses were performed for birth weight  $\leq 1000$  g, and for boys and girls separately.

For the neuroanatomical volumes, we first applied a general linear model (GLM) on the 12 bilateral brain volumes, with hemisphere as within-subjects factors and gender, age, birth weight, gestational age, and group as the between-subject factors. There was no significant hemisphere  $\times$  group interaction ( $P = .15$ ) and for all further analyses the average value of the right and left hemisphere volumes was used. All MRI volume results were Bonferroni-corrected by a factor of 15 (reflecting the number of regions of interest), approximately corresponding to a corrected  $\alpha$  of  $<.003$ .

Surface-based cortical analyses were performed on a vertex-wise (point-by-point) level by using GLMs in FreeSurfer. Main effects of group were tested while controlling for gender, age, birth weight, and gestational age. Separate analyses were performed for cortical volume,

surface area, and thickness maps. The surface maps were thresholded by a conventional criterion for correction for multiple comparisons (false discovery rate at the 5% level).<sup>48</sup>

All above volume and cortical analyses were repeated after removing the 4 participants with significant pathology on MRI ( $n = 77$ ). All analyses for volume and cortex were repeated for birth weight  $\leq 1000$  g, and interaction analyses for gender  $\times$  group were performed with 2-way analysis of covariance.

## RESULTS

### General Characteristics

There were no significant baseline differences between the intervention and control groups regarding age at follow-up, gender, mother's education, ethnicity, or perinatal data (Tables 1 and 2). Similar analyses were performed for the 81 children with MRI of sufficient quality, with the same results (Tables 1 and 2). There were no significant differences in baseline and perinatal data between the 98 children who met for follow-up and the 31 children lost to follow-up, except for respiratory distress syndrome (64.5% among the 98, and 38.7% among the 31 children,  $P = .009$ ).

### Cognitive Abilities

There were no significant differences between the intervention and control groups regarding general or specific cognitive outcomes (Table 3). General intellectual abilities measured with the Wechsler Abbreviated Scale of Intelligence as FSIQ, VIQ, and PIQ were not different ( $P > .05$ ) between the 2 groups. Similarly, we did not find any significant differences between the 2 groups regarding short-term and working memory (Wechsler Intelligence Scale for Children III Digit Span), learning and memory (CVLT-II), or motor coordination (Grooved Pegboard test;

**TABLE 1** Baseline Characteristics of Intervention Versus Control Group, Total Sample and MRI Sample

	Total Sample Intervention, n = 45	Total Sample Control, n = 53	P	MRI Sample Intervention, n = 41	MRI Sample Control, n = 40	P
Age at follow-up, mean (SD), y	8.6 (0.3)	8.6 (0.3)	.35	8.6 (0.2)	8.6 (0.3)	.60
Boy, No. (%)	22 (49)	27 (51)	.84	20 (49)	23 (58)	.43
Ethnicity, No. (%)						
Norwegian/European	41 (91)	44 (83)	.82	37 (90)	37 (93)	.69
Asian/African/American	4 (9)	9 (17)		4 (10)	3 (8)	
Maternal education, No. (%)						
<9 y	3 (7)	4 (8)		3 (7)	2 (5)	
10–12 y	23 (51)	23 (43)	.54	21 (51)	20 (50)	.89
> 12 y	19 (42)	26 (49)		17 (42)	18 (45)	

**TABLE 2** Perinatal Characteristics of Intervention Versus Control Group, Total Sample and MRI Sample

	Total Sample Intervention, n = 45	Total Sample Control, n = 53	P	MRI Sample Intervention, n = 41	MRI Sample Control, n = 40	P
Birth weight, mean (SD), g	1028 (277)	1070 (315)	.49	1046 (265)	1113 (273)	.27
Gestational age, mean (SD), wk	28.6 (2.9)	28.6 (2.6)	.98	28.7 (2.9)	29.0 (2.6)	.68
Parenteral nutrition, median (range), d	7 (0–37)	5 (0–43)	.15	7 (0–37)	5 (0–43)	.33
Respirator, median (range), d	1 (0–36)	0 (0–64)	.17	1 (0–36)	0 (0–64)	.22
Nasal continuous positive airway pressure, median (range), d	30 (0–116)	13 (0–272)	.25	23 (0–116)	17 (0–272)	.58
Transfusion of blood, median (range), d	1 (0–14)	0 (0–18)	.07	1 (0–14)	0 (0–18)	.05
Oxygen, median (range), d	17 (0–117)	11 (0–283)	.45	14 (0–117)	10 (0–283)	.53
Small for gestational age at birth, No. (%)	13/45 (29)	16/53 (30)	.89	11/41 (27)	11/40 (28)	.95
Smoking mother at birth, No. (%)	7/37 (19)	7/47 (15)	.62	6/35 (17)	6/35 (17)	.58
Exclusively breast milk, No. (%) <sup>a</sup>	35/43 (81)	37/50 (74)	.40	31/39 (79)	28/38 (74)	.55
Respiratory distress syndrome, No. (%)	33/45 (74)	31/53 (59)	.12	29/41 (71)	25/40 (63)	.43
Bronchopulmonary dysplasia, No. (%)	19/45 (42)	16/53 (30)	.22	16/41 (39)	11/40 (28)	.27
Retinopathy of prematurity, No. (%)	7/45 (16)	10/53 (19)	.92	5/41 (12)	6/40 (15)	.36
Grade 1–2 intraventricular hemorrhage, No. (%)	6/45 (13)	12/53 (23)	.60	6/41 (15)	8/40 (20)	.81
Periventricular leukomalacia, No. (%)	4/45 (9)	2/53 (4)	.20	3/41 (7)	1/40 (3)	.14
Necrotizing enterocolitis, No. (%)	4/45 (9)	2/53 (4)	.29	4/41 (10)	1/40 (3)	.18

<sup>a</sup> Mother's milk or donor.

Table 3). FSIQ among the children who completed MRI was not significantly different from the total sample. Follow-up analyses of children with birth weight  $\leq 1000$  g and girls and boys separately did not reveal any effects of supplementation with DHA/AA to these subgroups. However, both study groups scored mean FSIQ values below reference norms for their age, and the lower FSIQ values were associated with lower birth weight (Pearson's correlation coefficient 0.49;  $P = .01$ ). These results are in concordance with previous studies documenting lower IQ in premature children and imply that our study cohort is representative of the VLBW population.<sup>49–52</sup>

### Neuroanatomical Volumes

Table 4 presents neuroanatomical volumes in the intervention and the control groups of the MRI sample ( $n = 81$ ). There were no significant differences between the 2 groups for any of the studied brain volumes. The control group had an uncorrected trend toward larger lateral inferior ventricles; however, these results were not significant after Bonferroni correction. The same statistical analyses were repeated for the 77 participants without pathology on MRI; no corrected or uncorrected significant differences between the intervention and control groups were detected (Supplemental Table 5).

### Cortical Volume, Surface Area, and Thickness

There were no significant differences between the intervention and control groups regarding cortical volume, surface area, and thickness in the total MRI sample ( $n = 81$ ; Fig 2). The cerebral cortex is responsible for higher-order processes of thought, perception, and memory. Cortical volume is determined by both surface area and thickness. These distinct components are influenced by different evolutionary, genetic, and



**TABLE 3** Cognitive Outcome Measures at 8 Years, Intervention Versus Control Group

	Intervention, <i>n</i> = 45	Control, <i>n</i> = 53	<i>P</i> , uncorrected
FSIQ	92.7 (8.8)	93.9 (10.0) <sup>a</sup>	.73
VIQ	88.8 (10.3)	90.3 (12.5)	.73
PIQ	95.0 (12.6)	95.9 (14.4) <sup>a</sup>	.98
Pegboard dominant hand, s	96.4 (26.3)	86.0 (27.0) <sup>b</sup>	.68
Pegboard nondominant hand, s	112.3 (36.9)	111.3 (46.3) <sup>b</sup>	.83
CVLT verbal learning	32.8 (9.8)	35.1 (11.7)	.39
CVLT free recall	6.8 (3.4)	6.6 (3.1)	.57
CVLT delayed recall	6.8 (3.3)	6.4 (3.3)	.34
WISC forward	7.6 (1.8)	7.1 (1.5)	.11
WISC backward	3.3 (1.1)	3.5 (1.5)	.52

Data are presented as mean (SD) unless noted otherwise. Bonferroni-correction by a factor of 10 (reflecting the number of tests) roughly corresponds to a corrected  $\alpha$  of <0.005. There were no corrected or uncorrected significant differences. CVLT, California Verbal Learning Test; FSIQ, full scale IQ; PIQ, performance IQ; VIQ, verbal IQ; WISC, Wechsler Intelligence Scale for Children.

<sup>a</sup> *n* = 52 (1 blind child could not complete PIQ/FSIQ).

<sup>b</sup> *n* = 51 (1 blind child and 1 with cerebral palsy were excluded).

cellular processes, and follow unique developmental and lifespan trajectories.<sup>53</sup> Thus, it is important to investigate whether these components are differentially affected by nutrition or other postnatal interventions. The same analyses were repeated for the 77 participants without pathology on MRI, and no significant differences were found. All the above volume and cortical analyses were repeated for participants with birth weight  $\leq 1000$  g, and interaction analyses with gender  $\times$  group were conducted. No corrected or uncorrected significant differences between the intervention and control groups were observed.

## DISCUSSION

This study is the first long-term follow-up of an RCT of supplementation with DHA/AA to human milk fed VLBW infants investigating both cognitive functions and brain macrostructure. In our previous studies of this cohort, we observed improved cognitive function in the intervention group at 6 months,<sup>29</sup> and a suggested effect on attention at 20 months of age.<sup>36</sup> In this present follow-up study at 8 years, we did not detect any significant effect on cognition or brain macrostructure.

Supplementation with high doses of DHA/AA to premature infants has

been reported to have positive short-term effects on cognition in several studies.<sup>27–30</sup> In contrast, 2 reviews revealed little or modest effect on cognitive outcome at 12 to 18 months of age.<sup>32,33</sup> However, most of the studies in these reviews included premature infants (up to 37 weeks' gestational age), supplemented with relatively low doses of DHA. To our knowledge, only 1 study has followed children into school age to determine cognitive effects of LCPUFA supplementation in infancy.<sup>30</sup> Here, Isaacs et al<sup>30</sup> reported no overall differences between the intervention and control groups, but better literacy skills in girls after supplementation. Furthermore, supplementary analyses of feeding group (exclusively formula versus some maternal milk) concluded that the exclusively formula fed children increased FSIQ and VIQ after LCPUFA supplementation (mean VIQ increased from 86 to ~97–98). However, breastfed children were already at the same level (mean VIQ 98), and this was unaltered by supplementation. The authors consequently hypothesize that the natural content of LCPUFA is a key factor in the cognitive benefits of human milk. This is in concordance with several studies revealing improved cognition as 1 of the many advantages of human milk.<sup>18,54–56</sup> In our present follow-up study, both groups received human milk with its natural content of DHA/AA, and in addition, the intervention group got extra DHA/AA supplementation. Thus, our design differs from that of most other studies.

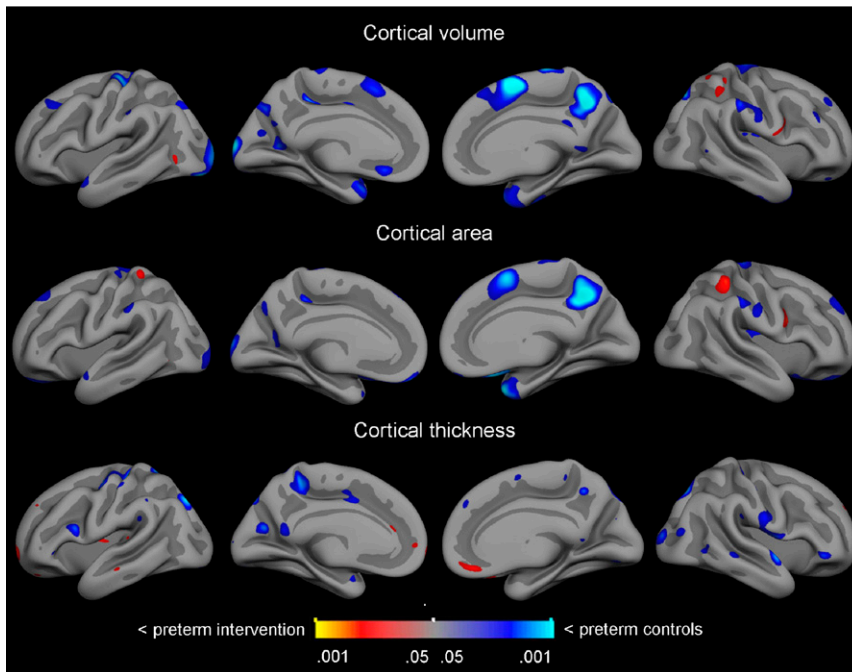
Nutrition plays a crucial role in brain development, and nutritional effects have been documented with MRI.<sup>14–17,38,55</sup> Longitudinal studies on effects of LCPUFA-supplementation measured with cerebral MRI are, however, scarce. McNamara et al<sup>19</sup> showed that supplementation with DHA increased prefrontal cortex activation on

**TABLE 4** Neuroanatomical Volumes, Intervention Versus Control Group

	Intervention, <i>n</i> = 41	Control, <i>n</i> = 40	<i>P</i> , uncorrected
ICV, mm <sup>3</sup>	1 454 894 (134 778)	1 484 593 (131 387)	.68
Cortical GM, mm <sup>3</sup>	268 326 (25 633)	276 107 (25 053)	.31
Cerebral WM, mm <sup>3</sup>	196 759 (23 165)	199 846 (21 499)	.85
Cerebellar GM, mm <sup>3</sup>	54 433 (7170)	56 460 (5717)	.39
Cerebellar WM, mm <sup>3</sup>	11 288 (1889)	11 667 (1477)	.68
Thalamus, mm <sup>3</sup>	6733 (642)	6818 (620)	.80
Amygdala, mm <sup>3</sup>	1363 (177)	1432 (206)	.27
Hippocampus, mm <sup>3</sup>	3855 (475)	3890 (441)	.79
Accumbens, mm <sup>3</sup>	652 (117)	650 (103)	.47
Caudate, mm <sup>3</sup>	3697 (601)	3887 (485)	.31
Pallidum, mm <sup>3</sup>	1716 (255)	1741 (201)	.86
Putamen, mm <sup>3</sup>	5686 (746)	5840 (640)	.75
Lateral ventricle, mm <sup>3</sup>	5892 (3568)	7975 (5154)	.03 <sup>a</sup>
Third and fourth ventricle, mm <sup>3</sup>	2570 (601)	2744 (834)	.23
Corpus callosum, mm <sup>3</sup>	2527 (436)	2505 (446)	.19

Data are presented as mean (SD) unless noted otherwise. Bonferroni-correction by a factor of 15 (reflecting the number of regions of interest) roughly corresponds to a corrected  $\alpha$  of <0.003. Bold font indicates uncorrected significance ( $P < .05$ ). GM, gray matter; WM, white matter.

<sup>a</sup> Uncorrected significance ( $P < .05$ ).



**FIGURE 2** Cortical volume, surface area, and thickness in the intervention group versus the control group. Colors indicate significance levels for each group. GLM was used to test the main effects of group while controlling for gender, age, birth weight, and gestational age. The results are uncorrected for multiple comparisons.

functional MRI during sustained attention in 8- to 10-year-old healthy boys. In contrast, 1 other intervention study with DHA/AA to preterm infants revealed no positive influence on structural brain maturation at 3 and 12 months.<sup>37</sup> However, the dosages of DHA were low (15 mg DHA per 100 mL formula, 31 mg AA per 100 mL), and the number of participants was 42.<sup>37</sup> To our knowledge, no other RCT with high-dose LCPUFA has MRI as end point. To further sharpen the scientific evidence of what nutrients are influencing brain growth, intervention studies with MRI are warranted.

The long follow-up time is a strength of our present study, although it allows accumulation of confounders unrelated to the intervention. Our negative findings at follow-up might be due to the limited time of supplementation after birth, and may explain why we could only report effects at 6 and

20 months age. Studies of LCPUFA supplementation to school-age children and adults have revealed improvement of literacy during the period of supplementation.<sup>57,58</sup> This may indicate an effect of ongoing supplementation, and such studies of VLBW infants in school age would be informative. However, nutrition is only 1 of many factors influencing the vulnerable premature brain, and the immature status of these infants may probably never be fully compensated for by nutrition or other postnatal interventions.

One limitation of our present study is that quantitative MRI might not be sensitive enough to discover subtle effects on brain structure. Fatty acids are hypothesized to improve myelination, and further studies should examine whether this is detectable with other MRI techniques like diffusion tensor imaging.<sup>38</sup> Another potential weakness of our study is the exclusion criteria of

major congenital abnormalities and cerebral hemorrhage (grade 3 or 4), and in our original recruitment 59 children were excluded.<sup>29</sup> This neurologically vulnerable group might perform even lower on cognitive testing and have alterations on MRI, and is therefore a group who could be hypothesized to benefit from supplementation with LCPUFA.

The major strengths of our present study are the long-term follow-up and the multidisciplinary approach combining aspects of prematurity, nutrition, neuropsychology, and structural neuroimaging. We report a high follow-up rate of 98 of 129 (76%), and the children seen at 8 years did not differ significantly in baseline or prenatal characteristics from the children lost to follow-up or the MRI sample, indicating little if any bias due to the lower number of participants in the MRI sample. The 95% CI of the difference in FSIQ is -5.1 to 2.5, meaning the difference between the 2 groups is small or nonexistent (<1 SD). This gives a precise estimate, indicating that the current study should be powered to answer the question of effects of LCPUFA supplementation on IQ, even with a follow-up rate of 76%.

## CONCLUSIONS

In this present follow-up study of our RCT of supplementation with high dose DHA/AA in human milk to VLBW infants, we could not detect any significant effects on cognitive abilities at 8 years of age. Equally, MRI revealed no effects of supplementation on neuroanatomical brain volumes or cortical surface volume, area, or thickness. Further RCTs with MRI-derived end points are warranted to clarify the effects of LCPUFAs on long-term brain development and hence preclude neurocognitive sequelae for next generations of premature children.

**FINANCIAL DISCLOSURE:** The authors have indicated they have no financial relationships relevant to this article to disclose.

**FUNDING:** Supported by the Research Council of Norway, the South-Eastern Norway Regional Health Authority, and the University of Oslo, Norway.

**POTENTIAL CONFLICT OF INTEREST:** The authors have indicated they have no potential conflicts of interest to disclose.

**COMPANION PAPER:** A companion to this article can be found on page 1128, and online at [www.pediatrics.org/cgi/doi/10.1542/peds.2015-0813](http://www.pediatrics.org/cgi/doi/10.1542/peds.2015-0813).

## REFERENCES

1. Volpe JJ. Brain injury in premature infants: a complex amalgam of destructive and developmental disturbances. *Lancet Neurol*. 2009;8(1):110–124
2. de Kieviet JF, Zoetebier L, van Elburg RM, Vermeulen RJ, Oosterlaan J. Brain development of very preterm and very low-birthweight children in childhood and adolescence: a meta-analysis. *Dev Med Child Neurol*. 2012;54(4):313–323
3. Keunen K, Kersbergen KJ, Groenendaal F, Isgum I, de Vries LS, Benders MJ. Brain tissue volumes in preterm infants: prematurity, perinatal risk factors and neurodevelopmental outcome: a systematic review. *J Matern Fetal Neonatal Med*. 2012;25(suppl 1):89–100
4. Bjuland KJ, Løhaugen GC, Martinussen M, Skranes J. Cortical thickness and cognition in very-low-birth-weight late teenagers. *Early Hum Dev*. 2013;89(6):371–380
5. Martinussen M, Fischl B, Larsson HB, Skranes J, Kulseng S, Vangberg TR, et al. Cerebral cortex thickness in 15-year-old adolescents with low birth weight measured by an automated MRI-based method. *Brain*. 2005;128(pt 11):2588–2596
6. Phillips JP, Montague EQ, Aragón M, et al. Prematurity affects cortical maturation in early childhood. *Pediatr Neurol*. 2011;45(4):213–219
7. Martinussen M, Flanders DW, Fischl B, et al. Segmental brain volumes and cognitive and perceptual correlates in 15-year-old adolescents with low birth weight. *J Pediatr*. 2009;155(6):848–853
8. Grunewaldt KH, Fjørtoft T, Bjuland KJ, et al. Follow-up at age 10 years in ELBW children - functional outcome, brain morphology and results from motor assessments in infancy. *Early Hum Dev*. 2014;90(10):571–578
9. Lax ID, Duerden EG, Lin SY, et al. Neuroanatomical consequences of very preterm birth in middle childhood. *Brain Struct Funct*. 2013;218(2):575–585
10. Griffiths ST, Elgen IB, Chong WK, et al. Cerebral magnetic resonance imaging findings in children born extremely preterm, very preterm, and at term. *Pediatr Neurol*. 2013;49(2):113–118
11. Spittle AJ, Boyd RN, Inder TE, Doyle LW. Predicting motor development in very preterm infants at 12 months' corrected age: the role of qualitative magnetic resonance imaging and general movements assessments. *Pediatrics*. 2009;123(2):512–517
12. Dubois J, Benders M, Borradori-Tolsa C, et al. Primary cortical folding in the human newborn: an early marker of later functional development. *Brain*. 2008;131(pt 8):2028–2041
13. Soria-Pastor S, Padilla N, Zubiaurre-Elorza L, et al. Decreased regional brain volume and cognitive impairment in preterm children at low risk. *Pediatrics*. 2009;124(6). Available at: [www.pediatrics.org/cgi/content/full/124/6/e1161](http://www.pediatrics.org/cgi/content/full/124/6/e1161)
14. Isaacs EB, Gadian DG, Sabatini S, et al. The effect of early human diet on caudate volumes and IQ. *Pediatr Res*. 2008;63(3):308–314
15. Tan M, Abernethy L, Cooke R. Improving head growth in preterm infants—a randomised controlled trial II: MRI and developmental outcomes in the first year. *Arch Dis Child Fetal Neonatal Ed*. 2008;93(5):F342–F346
16. Abernethy LJ, Cooke RW, Foulger-Hughes L. Caudate and hippocampal volumes, intelligence, and motor impairment in 7-year-old children who were born preterm. *Pediatr Res*. 2004;55(5):884–893
17. Isaacs EB, Morley R, Lucas A. Early diet and general cognitive outcome at adolescence in children born at or below 30 weeks gestation. *J Pediatr*. 2009;155(2):229–234
18. Vohr BR, Poindexter BB, Dusick AM, et al; National Institute of Child Health and Human Development National Research Network. Persistent beneficial effects of breast milk ingested in the neonatal intensive care unit on outcomes of extremely low birth weight infants at 30 months of age. *Pediatrics*. 2007;120(4). Available at: [www.pediatrics.org/cgi/content/full/120/4/e953](http://www.pediatrics.org/cgi/content/full/120/4/e953)
19. McNamara RK, Able J, Jandacek R, et al. Docosahexaenoic acid supplementation increases prefrontal cortex activation during sustained attention in healthy boys: a placebo-controlled, dose-ranging, functional magnetic resonance imaging study. *Am J Clin Nutr*. 2010;91(4):1060–1067
20. Kuratko CN, Barrett EC, Nelson EB, Salem N Jr. The relationship of docosahexaenoic acid (DHA) with learning and behavior in healthy children: a review. *Nutrients*. 2013;5(7):2777–2810
21. Martinez M. Tissue levels of polyunsaturated fatty acids during early human development. *J Pediatr*. 1992;120(4 pt 2):S129–S138
22. Fleith M, Clandinin MT. Dietary PUFA for preterm and term infants: review of clinical studies. *Crit Rev Food Sci Nutr*. 2005;45(3):205–229
23. Kuipers RS, Luxwolda MF, Offringa PJ, Boersma ER, Dijck-Brouwer DA, Muskiet FA. Fetal intrauterine whole body linoleic, arachidonic and docosahexaenoic acid contents and accretion rates. *Prostaglandins Leukot Essent Fatty Acids*. 2012;86(1–2):13–20
24. Westerberg AC, Henriksen C, Ellingvåg A, et al. First year growth among very low birth weight infants. *Acta Paediatr*. 2010;99(4):556–562
25. Helland IB, Saarem K, Saugstad OD, Drevon CA. Fatty acid composition in maternal milk and plasma during supplementation with cod liver oil. *Eur J Clin Nutr*. 1998;52(11):839–845
26. Innis SM. Essential fatty acid transfer and fetal development. *Placenta*. 2005;26(suppl A):S70–S75
27. Makrides M, Gibson RA, McPhee AJ, et al. Neurodevelopmental outcomes of preterm infants fed high-dose docosahexaenoic acid: a randomized



- controlled trial. *JAMA*. 2009;301(2):175–182
28. Makrides M, Anderson A, Gibson RA, Collins CT. Improving the neurodevelopmental outcomes of low-birthweight infants. *Nestle Nutrition Institute Workshop Series*. 2013; 74:211–221
  29. Henriksen C, Haugholt K, Lindgren M, et al. Improved cognitive development among preterm infants attributable to early supplementation of human milk with docosahexaenoic acid and arachidonic acid. *Pediatrics*. 2008;121(6):1137–1145
  30. Isaacs EB, Ross S, Kennedy K, Weaver LT, Lucas A, Fewtrell MS. 10-year cognition in preterms after random assignment to fatty acid supplementation in infancy. *Pediatrics*. 2011;128(4). Available at: [www.pediatrics.org/cgi/content/full/128/4/e890](http://www.pediatrics.org/cgi/content/full/128/4/e890)
  31. Boucher O, Burden MJ, Muckle G, et al. Neurophysiologic and neurobehavioral evidence of beneficial effects of prenatal omega-3 fatty acid intake on memory function at school age. *Am J Clin Nutr*. 2011;93(5):1025–1037
  32. Smithers LG, Gibson RA, McPhee A, Makrides M. Effect of long-chain polyunsaturated fatty acid supplementation of preterm infants on disease risk and neurodevelopment: a systematic review of randomized controlled trials. *Am J Clin Nutr*. 2008;87(4):912–920
  33. Schulzke SM, Patole SK, Simmer K. Long-chain polyunsaturated fatty acid supplementation in preterm infants. *Cochrane Database Syst Rev*. 2011; (2): CD000375
  34. Koo W, Tank S, Martin S, Shi R. Human milk and neurodevelopment in children with very low birth weight: a systematic review. *Nutr J*. 2014;13(1):94
  35. Zhang P, Lavoie PM, Lacaze-Masmonteil T, Rhoads M, Marc I. Omega-3 long-chain polyunsaturated fatty acids for extremely preterm infants: a systematic review. *Pediatrics*. 2014;134(1):120–134
  36. Westerberg AC, Schei R, Henriksen C, et al. Attention among very low birth weight infants following early supplementation with docosahexaenoic and arachidonic acid. *Acta Paediatr*. 2011;100(1):47–52
  37. van Wezel-Meijler G, van der Knaap MS, Huisman J, Jonkman EJ, Valk J, Lafeber HN. Dietary supplementation of long-chain polyunsaturated fatty acids in preterm infants: effects on cerebral maturation. *Acta Paediatr*. 2002;91(9):942–950
  38. Sizonenko SV, Babiloni C, de Bruin EA, et al. Brain imaging and human nutrition: which measures to use in intervention studies? *Br J Nutr*. 2013;110 (suppl 1):S1–S30
  39. Wechsler D. *Wechsler Abbreviated Scale of Intelligence (WASI)*. San Antonio, TX: The Psychological Corporation; 1999
  40. Wechsler D. *Wechsler Intelligence Scale for children (WISC-III)*. 3rd ed. San Antonio, TX: The Psychological Corporation; 1992
  41. Delis DC, Kramer JH, Kaplan E, Ober BA. *California Verbal Learning Test (CVLT-II)*. 2. San Antonio, TX: The Psychological Corporation; 2000
  42. Lafayette Instrument Company, Inc. *Lafayette Instrument Grooved Pegboard Test. User's manual*. Lafayette, IN: Lafayette Instrument Company, Inc; 2002
  43. Dale AM, Fischl B, Sereno MI. Cortical surface-based analysis. I. Segmentation and surface reconstruction. *Neuroimage*. 1999;9(2):179–194
  44. Fischl B, Salat DH, Busa E, et al. Whole brain segmentation: automated labeling of neuroanatomical structures in the human brain. *Neuron*. 2002;33(3):341–355
  45. Fischl B, Sereno MI, Dale AM. Cortical surface-based analysis. II: Inflation, flattening, and a surface-based coordinate system. *Neuroimage*. 1999; 9(2):195–207
  46. Fischl B. FreeSurfer. *Neuroimage*. 2012; 62(2):774–781
  47. Buckner RL, Head D, Parker J, et al. A unified approach for morphometric and functional data analysis in young, old, and demented adults using automated atlas-based head size normalization: reliability and validation against manual measurement of total intracranial volume. *Neuroimage*. 2004;23(2):724–738
  48. Genovese CR, Lazar NA, Nichols T. Thresholding of statistical maps in functional neuroimaging using the false discovery rate. *Neuroimage*. 2002;15(4):870–878
  49. Hutchinson EA, De Luca CR, Doyle LW, Roberts G, Anderson PJ; Victorian Infant Collaborative Study Group. School-age outcomes of extremely preterm or extremely low birth weight children. *Pediatrics*. 2013;131(4). Available at: [www.pediatrics.org/cgi/content/full/131/4/e1053](http://www.pediatrics.org/cgi/content/full/131/4/e1053)
  50. Løhaugen GC, Gramstad A, Evensen KA, et al. Cognitive profile in young adults born preterm at very low birthweight. *Dev Med Child Neurol*. 2010;52(12):1133–1138
  51. Skranes J, Løhaugen GC, Evensen KA, et al. Entorhinal cortical thinning affects perceptual and cognitive functions in adolescents born preterm with very low birth weight (VLBW). *Early Hum Dev*. 2012;88(2):103–109
  52. Skranes J, Løhaugen GC, Martinussen M, Haberg A, Brubakk AM, Dale AM. Cortical surface area and IQ in very-low-birth weight (VLBW) young adults. *Cortex*. 2013;49(8):2264–2271
  53. Geschwind DH, Rakic P. Cortical evolution: judge the brain by its cover. *Neuron*. 2013;80(3):633–647
  54. Vohr BR, Poindexter BB, Dusick AM, et al; NICHD Neonatal Research Network. Beneficial effects of breast milk in the neonatal intensive care unit on the developmental outcome of extremely low birth weight infants at 18 months of age. *Pediatrics*. 2006;118(1). Available at: [www.pediatrics.org/cgi/content/full/118/1/e115](http://www.pediatrics.org/cgi/content/full/118/1/e115)
  55. Isaacs EB, Fischl BR, Quinn BT, Chong WK, Gadian DG, Lucas A. Impact of breast milk on intelligence quotient, brain size, and white matter development. *Pediatr Res*. 2010;67(4):357–362
  56. Lucas A, Morley R, Cole TJ, Lister G, Leeson-Payne C. Breast milk and subsequent intelligence quotient in children born preterm. *Lancet*. 1992; 339(8788):261–264
  57. Richardson AJ, Montgomery P. The Oxford-Durham study: a randomized, controlled trial of dietary supplementation with fatty acids in children with developmental coordination disorder. *Pediatrics*. 2005; 115(5):1360–1366
  58. Cyhlarova E, Bell JG, Dick JR, Mackinlay EE, Stein JF, Richardson AJ. Membrane fatty acids, reading and spelling in dyslexic and non-dyslexic adults. *Eur Neuropsychopharmacol*. 2007;17(2):116–121
  59. Wonderlick JS, Ziegler DA, Hosseini-Varnamkhashi P, et al. Reliability of MRI-derived cortical and subcortical morphometric measures: effects of pulse sequence, voxel geometry, and parallel imaging. *Neuroimage*. 2009; 44(4):1324–1333

## Long-Chain Polyunsaturated Fatty Acids and Cognition in VLBW Infants at 8 years: an RCT

Astrid Nylander Almaas, Christian K. Tamnes, Britt Nakstad, Christine Henriksen, Kristine B. Walhovd, Anders M. Fjell, Paulina Due-Tønnessen, Christian A. Drevon and Per Ole Iversen

*Pediatrics* 2015;135:972

DOI: 10.1542/peds.2014-4094 originally published online May 18, 2015;

<b>Updated Information &amp; Services</b>	including high resolution figures, can be found at: <a href="http://pediatrics.aappublications.org/content/135/6/972">http://pediatrics.aappublications.org/content/135/6/972</a>
<b>References</b>	This article cites 55 articles, 13 of which you can access for free at: <a href="http://pediatrics.aappublications.org/content/135/6/972#BIBL">http://pediatrics.aappublications.org/content/135/6/972#BIBL</a>
<b>Subspecialty Collections</b>	This article, along with others on similar topics, appears in the following collection(s): <b>Administration/Practice Management</b> <a href="http://www.aappublications.org/cgi/collection/administration:practice_management_sub">http://www.aappublications.org/cgi/collection/administration:practice_management_sub</a> <b>Quality Improvement</b> <a href="http://www.aappublications.org/cgi/collection/quality_improvement_sub">http://www.aappublications.org/cgi/collection/quality_improvement_sub</a> <b>Rheumatology/Musculoskeletal Disorders</b> <a href="http://www.aappublications.org/cgi/collection/rheumatology:musculoskeletal_disorders_sub">http://www.aappublications.org/cgi/collection/rheumatology:musculoskeletal_disorders_sub</a> <b>Obesity</b> <a href="http://www.aappublications.org/cgi/collection/obesity_new_sub">http://www.aappublications.org/cgi/collection/obesity_new_sub</a>
<b>Permissions &amp; Licensing</b>	Information about reproducing this article in parts (figures, tables) or in its entirety can be found online at: <a href="http://www.aappublications.org/site/misc/Permissions.xhtml">http://www.aappublications.org/site/misc/Permissions.xhtml</a>
<b>Reprints</b>	Information about ordering reprints can be found online: <a href="http://www.aappublications.org/site/misc/reprints.xhtml">http://www.aappublications.org/site/misc/reprints.xhtml</a>

American Academy of Pediatrics

DEDICATED TO THE HEALTH OF ALL CHILDREN™



# PEDIATRICS®

OFFICIAL JOURNAL OF THE AMERICAN ACADEMY OF PEDIATRICS

## **Long-Chain Polyunsaturated Fatty Acids and Cognition in VLBW Infants at 8 years: an RCT**

Astrid Nylander Almaas, Christian K. Tamnes, Britt Nakstad, Christine Henriksen, Kristine B. Walhovd, Anders M. Fjell, Paulina Due-Tønnessen, Christian A. Drevon and Per Ole Iversen

*Pediatrics* 2015;135;972

DOI: 10.1542/peds.2014-4094 originally published online May 18, 2015;

The online version of this article, along with updated information and services, is located on the World Wide Web at:

<http://pediatrics.aappublications.org/content/135/6/972>

Data Supplement at:

<http://pediatrics.aappublications.org/content/suppl/2015/05/12/peds.2014-4094.DCSupplemental>

Pediatrics is the official journal of the American Academy of Pediatrics. A monthly publication, it has been published continuously since 1948. Pediatrics is owned, published, and trademarked by the American Academy of Pediatrics, 141 Northwest Point Boulevard, Elk Grove Village, Illinois, 60007. Copyright © 2015 by the American Academy of Pediatrics. All rights reserved. Print ISSN: 1073-0397.

American Academy of Pediatrics

DEDICATED TO THE HEALTH OF ALL CHILDREN™

